

# The German Longhaired Pointer Club

(provisional)

## NEWSLETTER



Printed by J C Graphics  
Tel: 01977 671368 Email: [jc.graphics@virgin.net](mailto:jc.graphics@virgin.net)

SPRING 2004



# Committee

2003/2004

## Chairman

David Winser  
Pointers  
Wistow  
Huntingdon  
Cambs. PE28 2QH  
Tel/Fax: 01487 822366  
Email: david@winser.go-plus.net

## Vice Chairman

Sheila Kuban  
The Hawks Nest  
Prey Heath  
Mayford  
Woking  
Surrey. GU22 0SL  
Tel: 01483 763538

## Honorary Secretary/Treasurer

Eileen Winser  
Pointers  
Wistow  
Huntingdon  
Cambs. PE28 2QH  
Tel/Fax: 01487 822366  
Email: eileen@winser.go-plus.net

## Newsletter Editor/ Committee Member

Sarah Bond  
The Willows  
Mill Road  
Buxhall  
Stowmarket  
Suffolk. IP14 3DW  
Tel: 01449 736544

## Committee Member

Rob Gould  
Wamil Hythe  
The Street  
Worlington  
Bury St Edmunds  
Suffolk. IP28 8RX  
Tel: 01638 717871  
Email: rob@glp.demon.co.uk

## It Keeps Getting Better .....

I hope you have all had a wonderful season. I have. Starting with the early days of fitness training in July followed by the heart-bursting sessions on the hill after what seemed to be the last grouse left in Scotland; the wild fen pheasants that know too much about fast running dogs and bad men with guns; forays after wildfowl on the Washes and then ending the season with a series of rough days in the company of like-minded people, each with their own steely-muscled pointer - **that's** what it is all about!

One of the happiest and most important times for me was the Club's field trial training day at the end of October. I came away from it enthusing about the ability of **all** the dogs that ran. As a Breed Club with the object of promoting GLP's as working gun dogs, we certainly have a lot going for us.

**The** event of the season was to be following on directly behind Rob Gould and Morgan at the Boythorpe Open Stake. I saw every run in detail, and Morgan was excellent, first capitalising on some indifferent shooting to bring back a scorcher of a runner, then taking every opportunity to display her skills as a hard hunting, meticulous dog that anyone would want to shoot over. I have every hope and expectation that she will be the second GLP field trial champion next year. As a Club we certainly are showing the HPR world a thing or two.





Our dogs are now recovering, as I suspect yours are. I will have to make do with stalking, until the Fallow season closes in April.

The grouse? Don't worry about them. We chose not to shoot, but scared them witless with some young peregrine falcons. Most will still be up there, which is where I am now dreaming of going next August.

Have a good summer, and let us all see some more dogs competing in the autumn.

**David Winser**

oooooooo

If you have good photographs of dogs working please let me have copies. We would like as many different pictures of dogs as possible so we may choose photographs, both for the stand and also for future newsletters.

## Notice Convening The Annual General Meeting

The Annual General Meeting of the German Longhaired Pointer Club will be held at Pointers, Wistow, Huntingdon, Cambs. PE28 2QH, on Sunday 30<sup>th</sup> May 2004 at 11am.

Nomination papers for the Committee and Officers of the Club must be submitted on an official Nomination Form available from the Honorary Secretary.

Completed Nomination Papers should be returned to the Honorary Secretary, Pointers, Wistow, Huntingdon, Cambs. PE28 2QH. by not later than 30<sup>th</sup> April 2004.

Resolutions in accordance with Club Rule 10 (c) must also be in the hands of the Honorary Secretary by not later than 30<sup>th</sup> April 2004.

oooooooo

After the AGM and Lunch we will be holding an informal retrieving test. It is intended to be fun so stay for the afternoon and have a go. Please return the form to book lunch.

Entries taken on the day. £1 per dog.  
Rosettes for 1<sup>st</sup> 2<sup>nd</sup> and 3<sup>rd</sup> in each class.

There will be three classes:

**Beginners and Puppies** - (under 18 months) The ones to watch

**Improvers** - (dogs which have not received an award in a working test or field trial. Next years winners

**Field Trialers** - They will show us how to do it.

oooooooo



## The Winners Gallery

The Field Trial season is over for another year and once again Longhairs have done very well in the awards, not only here in England but also in Ireland.

There are now four German Longhaired Pointers in the country qualified for Open Field Trial Stakes. I also know of at least another six new dogs that will be ready to run in Novice trials next season. I hope that everyone will keep up the good work during the summer months and that next season will be the year of the Longhair.

There are a lot of working tests organised throughout the country, not least of all ours, which will as usual, be held at Gill Mill Quarry. Its all good practice and keeps the dogs steady and fit.

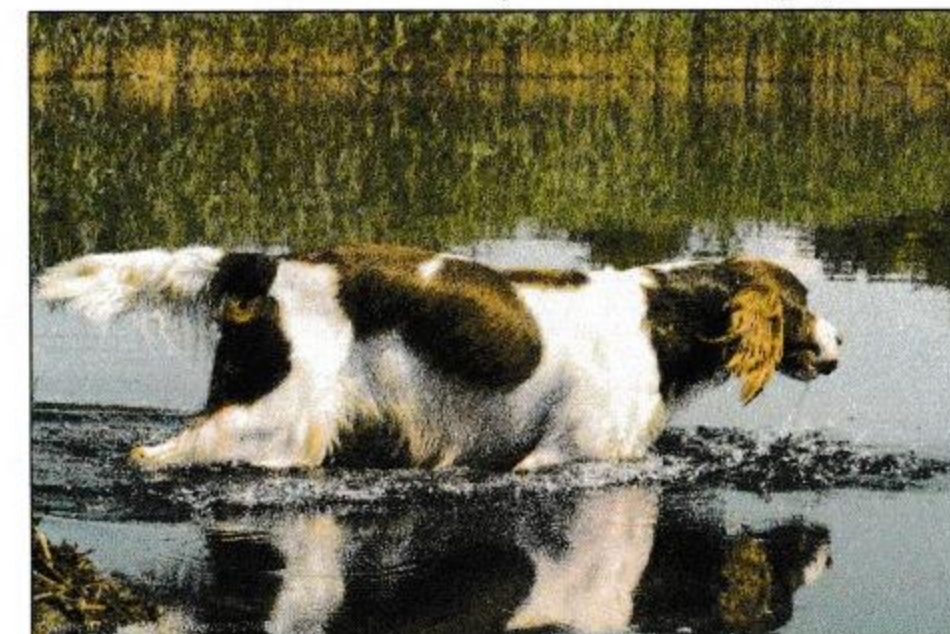
### Eileen Winsor



Rob Gould won an Open stake with Morgan (Wamilanghaar Ashiestiel)



Peter Crilly won an Open Stake in Ireland with Una (Ceannacroc Unique)



Sarah Bond won a Novice Stake with Tarn (Questor Cranberry)

### Other placed Longhairs

Larry Wilks had a 3<sup>rd</sup> in an All Aged Stake with Konan (Konan V.D. Hafkesdell Mit Arany)

Francis Smart had a 3<sup>rd</sup> in a Novice Stake with Acer (Wamilanghaar Acer)

*These are the only awards I am aware of and I apologise if you have been missed out. Would anyone gaining awards with their dogs in future please let me know. Eileen.*



## Working Test

We will be organising another working test at Gill Mill Quarry this year by kind permission of the owner Mr. John Smith. For those of you who have supported our working tests you will know that Gill Mill Quarry is a site that has been beautifully and sympathetically landscaped.

The tests take place around the lake with the Open quartering test on nearby set aside.

The event will be held on 11<sup>th</sup> July 2004 with a prompt 9.30am start and will be open to all hunt, point and retrieve breeds.

The judges this year will be

Steve Chant	-	Puppy
Peter Bakewell	-	Novice
Rory Major	-	Open.



A schedule and entry form is enclosed with this Newsletter. Schedules will also be sent to non- members who have entered in previous years.

Skinnners have agreed to sponsor the event and there will be a voucher for a 15 kilo bag of food for 1<sup>st</sup> 2<sup>nd</sup> and 3<sup>rd</sup> prize winners in each class; Individual awards to be won outright for first 1<sup>st</sup> to 3<sup>rd</sup> placed dogs and our Club Trophies to be held for the year by the first placed dog in each class.

There will also be a scurry (entry on the day) with a Skinnners voucher and a trophy for the winner.

Donations for the raffle and cakes for afternoon tea would be appreciated.

0000000



## Training Day for Longhairs

We held a training day last October for those owners who had put in all the necessary work and who's dogs were ready to enter field trials. Our host was Dominic Symington, himself a new owner of a Longhair. Brian Botterman was the trainer and Dominic Symington and David Winsor were the Guns.

We had a very enjoyable day. Of the nine handlers taking part five of them have had field trial awards.

The dogs were worked one at a time over set aside, stubble and root crops. All of the dogs, without exception, quartered the ground and used the wind showing excellent natural ability. As might be expected, some of the dogs were not 100 per cent steady to falling game, but with some expert know how from Brian they all went away confident that they would be able to get on top of the steadiness and be ready to run in trials.



Dominic has offered the use of his land again this year and we hope to arrange another day in October just before the start of the field trials season. On behalf of everybody who took part the Club would like to thank Dominic for his hospitality. Brian has had his arm twisted and has agreed to be our instructor once again, so put on your tin hats - his comments are not always what you want to hear, but they are very accurate!

There will be more about the training day in the Autumn Newsletter but if your dog is of, or coming up to, field trial standard and you would like to participate in the day, an early indication of numbers would be appreciated. If there are more than eight handlers wanting to take part we might be able to arrange a second day.

The cost last year was £40 per handler but could be less, depending on the number of birds killed. Only pointed or worked birds will be shot, as the emphasis is on the natural hunting and game finding of the dogs. It is not a competition and no dogs are eliminated.





## **The Kennel Club/ British Small Animal Veterinary Association Scientific Committee nation-wide survey of pure-bred dogs**

Questionnaires are included with this Newsletter and we would be grateful if you would return completed questionnaires to the Animal Health Trust in the prepaid envelope supplied. All information provided by members will be strictly confidential and anonymous.

ooooooo

Although the German Longhaired Pointers in the UK do not appear to have any serious health problems there are the same problems to look for and guard against as with all large breed dogs. Hip dysplasia (HD), Osteochondrosis (OCD shoulder and elbow dysplasia) and Entropion.

We can all make sure that we do not add to these inherent problems by continuing to score our breeding dogs not only for HD but for OCD as well. David and I go one step further with our puppies by putting an endorsement on the pedigrees 'progeny not eligible for registration'. This endorsement can be lifted once the dogs are hip scored and the total for both hips is in single figures.

Some Norwegian friends told us that they charge £100 extra for their puppies which they refund when the hip scores are done. They are most concerned about hips in Norway and this is a good incentive to have the results of the radiographs.

I recently attended the 2004 Breeders' Symposium organised by the Kennel Club.

It was a very interesting day. There were lectures on:

**Pets and International Travel: Imported Canine Infectious Diseases.** Susan Shaw.

**Osteochondrosis.** John Houlton.

**New Insights into identification and treatment of allergic skin disease in dogs.** Dr. Steve Shaw.

**How to give puppies a better start, and how to help owners to avoid common problems.** Annette Conn.

I have asked for permission to reproduce their lecture notes in our newsletters as I think you will all find them very informative. More about that in the future.

The Kennel Club is encouraging breed clubs to appoint a Health Committee and at the last German Longhaired Pointer Club Management meeting it was decided to form such a committee. Those elected are Theo. Gould, Rob. Gould and Eileen Winser. Anybody wishing to discuss health matters in German Longhaired Pointers should call one of us. We will endeavour to answer your questions or alternatively find a man that can.

**Eileen Winser**

ooooooo



## **Spring is in the air but by the Summer the hay seeds are in their feet (and ears)**

"Dense tufts of hair between the toes", our breed standard says. But don't forget to check between the toes when you get back from a walk through grass fields because the dense tufts of hair will hold seeds which can penetrate the skin and cause a great deal of discomfort. I have also had experience of grass seeds migrating up the dog's leg and breaking out after a couple of weeks as far up as the shoulder. Of course by this time it is necessary to have a visit to the Vet as antibiotics will be needed to clear up the infection.

It only takes a few minutes to check and if it is done regularly the dog gets used to the 'after the walk ritual'. The hair between the pads is best trimmed away in the spring so that the grass seeds can't get such a good hold. It is also beneficial when the ground is wet and muddy because mud balls form between the pads held by the hair. If they are soaked in a bowl of water on your return home it is much easier to dissolve the mud. If left to dry out the balls of mud become very hard and the feet become very painful.

Whilst you are going over the dogs to check feet, don't forget to check the ears and eyelids as well. We once had a G.S.P. with a whole barley hawn inside her ear. She kept shaking her head but we could see nothing at all. It was only when we took her to a vet that the culprit was discovered. Fortunately on this occasion there was no long term damage. Grass seeds can also get under the eye lids so it is always worth checking at the same time. Another problem with the summer is the pollen thrown about when the dogs run through grass. It often causes irritation, a bit like those of us that suffer from hay fever. So a tube of ointment in the medicine cupboard is always useful 'just in case'. Most vets will supply something suitable.

We had a visit in January from Mette and Rune Ulverstad, from Norway. They came over to have a look at the Longhairs in England. Both Mette and Rune are very knowledgeable about not only Longhairs but Shorthairs and Wires as well. Rune is a Field Trial Judge and runs one of the most successful wirehairs in Norway. Mette is the secretary of the Health Committee for all breeds of German Pointers. She trains her own Longhairs for field trials and has also done very well. One of the many things that I learned from talking to them was care of dog's feet. Because the weather in Norway is much harsher than ours, their dogs have to work in snow for much of the winter. They often put specially made boots on their dogs to protect their feet.

We had just returned from a long hard shooting day with two of our dogs when they arrived. Mette noticed immediately that one of our dogs had 'sore feet'. She took a look and noticed deep cracks in the pads. She then explained that their dogs often get these deep cracks in their pads and asked me for a nail file. Mette spent the next half hour on the floor with him rubbing off the hard skin with an emery board. He quite enjoyed the extra attention and the treatment was not in the least painful. The next day he was sound again. Mette explained that by rubbing down the hard skin his feet heal much quicker and with the deep cracks gone the skin does not part when they put weight on their feet. This is a practice that I will now keep up especially in the winter. Once the pads split or are cut by the flints that are common in our part of the country, it takes a long time to heal. But rubbing off the rough edges makes them heal much quicker. Try it, it works.

**Eileen Winser**

0000000



## Discover Dogs

As most of you know Discover Dogs takes place twice a year, in March as part of Crufts at N.E.C. Birmingham and in November at Earls Court.

As part of Crufts it is a four day exhibition but at Earls Court it is only two days. The Kennel Club gives free parking for exhibitors and free admission. Lunch vouchers for £20 per day are also provided for each breed stand, and this year there was also a cash contribution towards travelling expenses.

Discover Dogs creates a great deal of interest and I expect that many of you saw your first Longhair at one of these exhibitions over the last few years.

It is a very enjoyable day, meeting and talking to people who have come along especially to choose the breed that is best suited to their lifestyle. Of course the Longhair may not be the dog for the majority of the people who show an interest. A great deal of tact is necessary to get this over to somebody who, possibly, lives in a flat in the middle of a big city. They are often determined that this beautiful dog with its sleek coat and calm temperament, that still wags its tail after hours spent in a small pen and after hundreds of children have patted it on the head, is for them. Of course they do not always appreciate that hours, days, weeks and months have been spent in training and these dogs are great ambassadors of the breed.



The German Longhaired Pointer is first and foremost a working gun dog and it is the purpose of this Club to promote our G.L.P's. as such. If just one person for every day spent at Discover Dogs is the right person to promote our breed and train and work it for the shooting gun dog scene, the effort is worth while.

If you would like to give up a half day to help at Crufts or Earls Court we would welcome your help. In the past years only a few of us have covered these days – often on our own – which makes it impossible to look at the show or even go to the snack bar. It would be nice to have a larger group of volunteers so that we can avoid having the same people or dogs on duty all day.

The Club provides an information leaflet to hand out to interested parties.

## German Longhaired Pointer Club Accounts to 1/10/03

### Income

Membership Fees	50.00
Club Shop	66.00
Seminar	230.00
Working Test	349.50
Raffle	50.00
Scurry	24.00

1,269.50

Opening Bank balance 985.58

2,255.08

### Expenditure

Maintenance of title	45.00
Postage	42.13
Newsletter	124.89
AGM/Seminar	223.09
Working Test	298.59
Shop	19.81

753.51

Closing Bank Balance 1,501.57

2,255.08

I have checked the German Longhaired Pointer records and confirm that the above receipts and expenditure account accurately reflects the transactions that have been made during the year ending 30<sup>th</sup> September 2003 and the Club's financial position as at that date.

Sheila Kuban

15<sup>th</sup> December 2003

OOOOOOO

### Dates for your diaries

G.W.P.Club Working Test	Byfield, Nr Banbury	28 <sup>th</sup> March
G.S.P.A Working Test	Stoke Bardolf	25 <sup>th</sup> April
Beta Gundog Weekend	Walton-on-Trent	1-2 <sup>nd</sup> May
GLP Club AGM & Fun day	Huntingdon. Cambs	30 <sup>th</sup> May
H.V.Club Working Test	Eynsham Hall. Oxon	31 <sup>st</sup> May
Norfolk & Suffolk HPRFT Club	Working Test	6 <sup>th</sup> June
G.S.P.C. Working Test	Brocket Park. Herts.	20 <sup>th</sup> June
Italian Spinone Club W/Test	Elstead. Surry	26 <sup>th</sup> June
G.L.P.Club Working Test	Ducklington. Oxon.	11 <sup>th</sup> July
CLA Game Fair	Blenheim Palace	23 - 25 <sup>th</sup> July
Training Day for Longhairs	Wormegay. K. Lynn	October (tba)
Discover Dogs	Earls Court	13-14 <sup>th</sup> Nov

For details of HPR working tests and contacts see Mick Phillips' web site  
<http://mysite.freemove.com/HPRTINFO>



## CULLIESHANGAN HOLIDAYS

Bring your dogs to Cullieshangan the new home of "MAPLEHAZE FINEARTS" in the heart of beautiful Speyside Malt Whisky country.

A traditional stone and slate farmhouse and steading set in five acres overlooking the hills of lower Speyside, Cullieshangan offers self catering accommodation or, to those booking shooting, B&B with the option of evening meal when ordered in advance. Guest accommodation in the old farmhouse consists of 2 bedrooms sleeping five/six, one double room (with a box room containing a "Z" bed off) and one family



room with three single beds, bathroom, lounge with multi-fuel stove, kitchen and downstairs cloakroom. All rooms are spacious and comfortably furnished. Outside you can relax with a BBQ in the south facing courtyard or lounge in the stone conservatory.

Purpose built kennels within the steading are at hand if required and a dog sitting service is available if you want a day out without the dogs.

Take your dogs on the many forest walks or on the Speyside Way all within minutes of Cullieshangan. The lovely sandy beaches, caves and coves of the Moray Coast are only fifteen miles away and more serious hill walkers have plenty of options with the Cairngorms and Aviemore one hours drive along the stunning Spey valley. The cities of Inverness and Aberdeen are a little more than an hour away.

Go on the Malt Whisky or Castle Trails or try the many quality golf courses in the area. Bird watchers can hope to glimpse ospreys along the Spey or capercallie in the woods behind the house.

Quality accommodation in a relaxed atmosphere at affordable prices where your dogs will be welcome.

### SHOOTING AND GUNDOG TRAINING BREAKS

All types of shooting can be arranged from small grouse days over your own dogs, mixed rough shooting to full driven days. Roe stalking and fishing is also available. It is possible to arrange most types of shooting whatever your requirements or budget, given sufficient notice.

Gundog training is also available from beginner to advanced with the opportunity to gain experience on most types of game and to have more advanced dogs shot over. For all enquiries, leaflets, photos and price lists - write phone or e-mail

**ANNE & STEVE JOHNSON**

Cullieshangan, Mulben, Keith, Banffshire. AB55 6YT. Tel: 01542860380

anne@maplehaze-finearts.co.uk

www.maplehaze-finearts.co.uk

## Club Items

Car Stickers	£1.50
Grooming Video	£10.00
Club Lapel Badge	£3.50
Notelet Cards	£1.50
Embroidered Blazer Badges	£6.50
Greetings Cards	£0.95

Available from the Dutch Club (on request)

Dummy Bags with G.L.P. motif	Euro 12.50
Umbrella with G.L.P. motif	Euro 12.00
Pewter GLP Brooch	Euro 4.00
Pewter GLP Key Ring	Euro 5.75

0000000

**Your next Newsletter will be due  
in August 2004**

To ensure you receive your Newsletter on time  
please send all material to be included to:  
Sarah Bond, The Willows, Mill Road, Buxhall,  
Stowmarket, Suffolk. IP14 3DW

***Before Monday 5th July 2004***

Any articles or letters received after this date  
will be included in the Spring 2005 issue

The editor reserves the right not to publish any articles or letters submitted